

Native Human Collagen type I Protein

Cat. No. Collagen type I-03H **Lot. No.** (See product label)

SPECIFICATION

Product Overview	Human collagen type I protein purified from human Placental villi.
Species	Human
Source	Placental villi
Description	<p>Collagen is the main structural protein in the extracellular space and is the most abundant protein in the ECM. Collagens are divided into two classes - fibril (types I, II, III, V) and non-fibril (types IV, VI). Type I collagen is the most abundant collagen and is expressed in almost all connective tissues including skin, tendon, and bone tissue. It is also the predominant component of the interstitial matrix. Type I collagen mutations are associated in a range of diseases including osteogenesis imperfecta and Ehlers-Danlos syndrome. Type I collagen consists of two $\alpha 1(I)$ chains and one $\alpha 2(I)$ chain.</p>
Purity	> 90% by SDS-PAGE
Applications	<p>ELISA – Quality tested SDS-PAGE – Quality tested Western Blot – Reported in literature Surface Plasmon Resonance – Reported in literature Cell Culture – Reported in literature Stimulation Studies – Reported in literature Coating Material for:</p>

 Tel: 1-631-559-9269 1-516-512-3133

 Email: info@creative-biomart.com  Fax: 1-631-938-8127

 45-1 Ramsey Road, Shirley, NY 11967, USA

Adhesion Studies – Reported in literature
 Autoimmune Studies – Reported in literature
 Blood Disorder Studies – Reported in literature
 Differentiation Studies – Reported in literature
 ECM Interaction Studies – Reported in literature
 Migration Studies – Reported in literature

Storage At 2-8 centigrade.

Concentration 0.5 mg/mL

Storage Buffer 500 mM acetic acid

GENE INFORMATION

Official Symbol [Collagen type I](#)

Synonyms

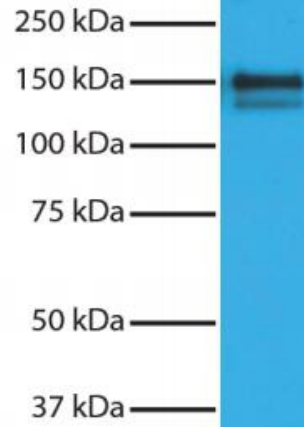
COL1A1; COL1A2; Collagen type I; collagen type I alpha 2 chain; OI4; EDSCV; EDSARTH2; collagen alpha-2(I) chain; alpha 2 type I procollagen; alpha 2(I) procollagen; alpha 2(I)-collagen; alpha-2 type I collagen; collagen I, alpha-2 polypeptide; collagen of skin, tendon and bone, alpha-2 chain; collagen, type I, alpha 2; epididymis secretory sperm binding protein; type I procollagen; collagen type I alpha 1 chain; OI1; OI2; OI3; OI4; EDSC; CAFYD; EDSARTH1; collagen alpha-1(I) chain; alpha-1 type I collagen; alpha1(I) procollagen; collagen alpha 1 chain type I; collagen alpha-1(I) chain preproprotein; collagen of skin, tendon and bone, alpha-1 chain; collagen, type I, alpha 1; pro-alpha-1 collagen type 1; type I proalpha 1; type I procollagen alpha 1 chain

 Tel: 1-631-559-9269 1-516-512-3133

 Email: info@creative-biomart.com  Fax: 1-631-938-8127

 45-1 Ramsey Road, Shirley, NY 11967, USA

WB



 Tel: 1-631-559-9269 1-516-512-3133

 Email: info@creative-biomart.com  Fax: 1-631-938-8127

 45-1 Ramsey Road, Shirley, NY 11967, USA